



**CAN-AM MAVERICK R**

# CAN-AM MAVERICK R

## ACCESSORIES

|                                     |     |
|-------------------------------------|-----|
| Roofs                               | 94  |
| Windshields & Wind Protection       | 94  |
| Mirrors                             | 95  |
| Upper Wind Nets                     | 95  |
| HMWPE Skid Plates                   | 96  |
| Bumpers & Guards                    | 96  |
| LinQ: Easy On, Easy Off Cargo       | 98  |
| Racks & Storage                     | 102 |
| ACM & SMART Accessories             | 105 |
| Lights                              | 106 |
| Audio Systems                       | 109 |
| Electrical & Electronic Accessories | 110 |
| Winches                             | 111 |
| Performance                         | 113 |





---

# MAVERICK R ACCESSORIES

---

# BUNDLE UP TO LEAVE YOUR MARK. YOUR MAVERICK R BUNDLES.

## STEP 1: CHOOSE YOUR ESSENTIAL BUNDLE

|          |                                   | Maverick R |
|----------|-----------------------------------|------------|
| STARTER  | Aluminum Side Mirrors             | 715007363  |
|          | Electronic Device Holder          | 715007176  |
|          | LinQ Side Cargo Boxes (13.5 L)    | 715007372  |
|          | Upper Door Storage Bags           | 715008065  |
| ADVANCED | Glass Windshield                  | 715007181  |
|          | Cold Air Roof Scoop               | 715008280  |
|          | Rear Wind Screen                  | 715007317  |
|          | XPS Screen Protector              | 860202680  |
| PEAK     | Intermittent Wiper & Washer Kit   | 715007173  |
|          | Wiper & Washer Kit Wiring Harness | 715008855  |

## STEP 2: PICK YOUR ADD-ON BUNDLE

|              |   | Maverick R |
|--------------|---|------------|
| ACM          | Accessory Control Module                | 715009796  |
|              | Rear ACM Harness                        | 715009268  |
|              | SMART Control Center for ACM            | 715007712  |
| SMART LIGHTS | SMART Integrated LED Side Mirror Lights | 715007185  |
|              | SMART Integrated LED Hood Light         | 715007378  |
|              | SMART Integrated LED Roof Light         | 715007322  |
|              | SMART LED Chase Lights                  | 715007727  |
| AUDIO        | Can-Am JL Audio System - Level 5        | 715007957  |
|              | Auxiliary Battery Installation Kit      | 715007837  |
| ADVENTURE    | Desert Front Bumper                     | 715007311  |
|              | LinQ Trunk Box (96L)                    | 715007182  |
|              | Adventure Roof Rack                     | 715007186  |
|              | LinQ Pivoting Rack                      | 715007306  |

# YOU DESERVE THE BEST. THE ESSENTIAL MAVERICK R BUNDLE.

## YOU WANT IT ALL? WE'VE GOT IT ALL!

**NOTHING  
BUT  
THE BEST**

|   | <b>Maverick R</b> |
|---|-------------------|
| Aluminum Side Mirrors                   | 715007363         |
| Electronic Device Holder                | 715007176         |
| LinQ Pivoting Rack                      | 715007306         |
| LinQ Side Cargo Boxes (13.5 L)          | 715007372         |
| LinQ Trunk Box (96 L)                   | 715007182         |
| Upper Door Storage Bags                 | 715008065         |
| Overhead Storage Bag                    | 715007379         |
| Shoulder Storage Bag                    | 715007371         |
| Glass Windshield                        | 715007181         |
| Cold Air Roof Scoop                     | 715008280         |
| Rear Wind Screen                        | 715007317         |
| Upper Wind Nets                         | 715007376         |
| XPS Screen Protector                    | 860202680         |
| Accessory Control Module                | 715009796         |
| Rear ACM Harness                        | 715009268         |
| SMART Control Center for ACM            | 715007712         |
| SMART Integrated LED Side Mirror Lights | 715007185         |
| SMART Integrated LED Hood Light         | 715007378         |
| SMART Integrated LED Roof Light         | 715007322         |
| SMART LED Chase Lights                  | 715007727         |
| Intermittent Wiper & Washer Kit         | 715007173         |
| Can-Am JL Audio System - Level 5        | 715007957         |
| Can-Am JL Audio Roof - Level 4          | 715007309         |
| Auxiliary Battery Installation Kit      | 715007837         |
| Rock Sliders                            | 715007170         |
| Desert Front Bumper                     | 715007311         |
| Desert Rear Bumper                      | 715007172         |
| HMWPE Skid Plate Kit                    | 715007373         |
| Front Intrusion Bar                     | 715007312         |

# ROOFS

## NEW Sport Roof

Maverick R

715007364



- Impact-resistant injected polypropylene.
- Provides excellent protection from the elements and downhill visibility.
- Designed to work with the Cold Air Roof Scoop (715008280).
- Windshield compatible.

## NEW Cold Air Roof Scoop

Maverick R

715008280



- Feeds fresh air to the engine compartment.
- Sleek design for a sleek racing look.
- Increases cold air to the intake to prevent power loss.
- Required when using a full windshield.
- Requires a Sport Roof or Can-Am JL Audio Roof - Level 4.
- Not compatible with the Audio Roof Flip Kit.

# WINDSHIELDS & WIND PROTECTION

## Windshields

### NEW Glass Windshield

Maverick R

715007181



- Curved and laminated glass full windshield.
- Seals firmly against the cage and protects both the rider and the passenger from the elements.
- Provides maximum optical clarity and abrasion resistance.
- Must be used with the Wiper & Washer Kit for clear visibility during severe riding conditions, including mud riding.
- Use with rear wind protection to maximize passenger comfort.
- Must be used with the Cold Air Roof Scoop (715008280).
- Compatible with the SMART Integrated Roof LED Light.
- Not compatible with the Audio Roof Flip Kit (715008164).

### NEW Full Windshield - Hardcoated

Maverick R

715007321



- Highly impact-resistant Quantum<sup>+</sup> hardcoated polycarbonate full windshield.
- Formed polycarbonate construction for enhanced rigidity.
- Provides excellent optical clarity and better abrasion resistance.
- Protects the driver and the passenger from the elements.
- Quick and easy toolless removal.
- Use with rear wind protection to maximize comfort for the passenger.
- Can be used with the Windshield Wiper & Washer Kit (715007173) (light-duty usage only).
- Compatible with SMART Integrated Roof LED Light.
- Must be used with the Cold Air Roof Scoop (715008280).
- Not compatible with the Audio Roof Flip Kit (715008164).

### Intermittent Wiper & Washer Kit

Maverick R

715007173



- An ideal way to keep your windshield clear in the rain, or while riding through mud and water.
- The wiper mechanism and washer fluid dispenser are perfectly concealed on the vehicle.
- The wiper and washer fluid dispenser installs at the bottom of the windscreen for maximum visibility.
- For use on Glass or Hardcoated Windshields.
- Intermittent wiper speed feature available when the kit is installed in combination with ACM.
- Electric Harness required (715008855) to hook up and operate the Wiper & Washer Kits when ACM is not installed. Sold separately.

### NEW Manual Wiper Kit

Maverick R

715009424



- Single manual wiper that can be used to clear windshield of debris.
- Easy to install system that requires no electrical hookup.
- Large ergonomic handle provides a good grip over the entire sweeping surface.
- Compatible with glass and hardcoated windshields that use top mounted wipers.

## Rear Wind Protection

### NEW Rear Polycarbonate Window

Maverick R

715007315



- High impact-resistant polycarbonate window.
- Reduces windshield backdraft and stops dust and rain from entering the cabin for added comfort.
- Quick and easy installation.
- Designed to work with Can-Am's JL Audio Level - 3 and 5 rear speakers, and all roofs.

### NEW Rear Wind Screen

Maverick R

715007317



- Full rear mesh screen reduces windshield backdraft for added cabin comfort.
- Installs quickly and easily on roll cage.

## MIRRORS

### NEW Aluminum Side Mirrors

Maverick R

715007363



- Sleek design.
- High-quality black molded aluminum for extreme durability.
- The convex surface provides a wider field of view and better visibility around the unit.
- Can be installed at any height on the cage A-pillar for optimized rider vision.
- Possibility to install the Integrated LED Side Mirror Lights (715007185).
- Adjustable ball-joint mirrors.
- Possibility to fold down the mirrors (fold-away mechanism).
- Compatible with windshields and upper door net.
- Sold in pairs.

### NEW Side Mirrors

Maverick R

715007188



- Sleek design.
- High-impact resistant plastic mirrors.
- The convex surface provides a wider field of view and better visibility around the unit. Can be installed at any height on the cage A-pillar for optimized rider vision.
- Adjustable ball-joint mirrors.
- Possibility to fold down the mirrors (fold-away mechanism).
- Compatible with windshields and upper door net.
- Sold in pairs.

### Rear View Mirror and Camera Monitor

Maverick R

715009410



- Fully waterproof rearview mirror and monitor kit.
- See exactly what you need to see with the multiple camera feeds from the rear view camera.
- This unit replaces the stock rearview mirror (the screen is integrated in the unit's replacement rearview mirror).
- The camera uses infrared light for night vision capabilities.

## UPPER WIND NETS

### NEW Upper Wind Nets

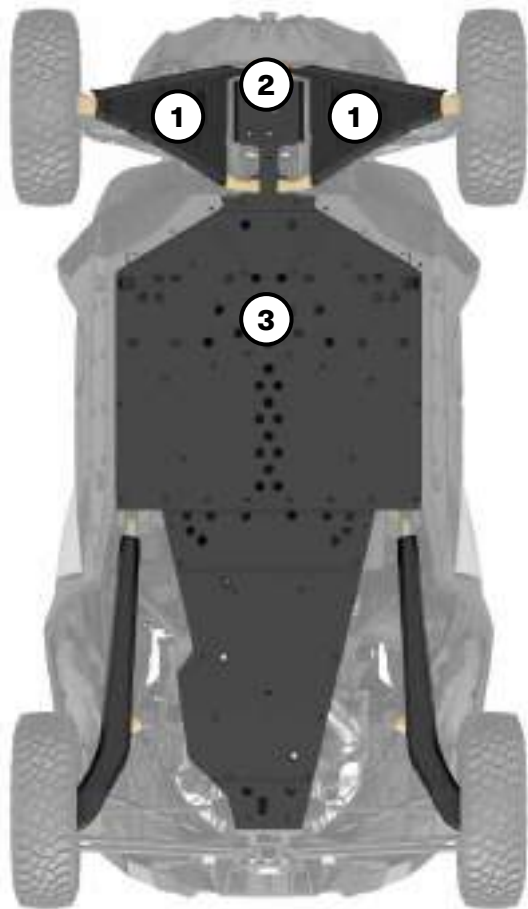
Maverick R

715007376



- This complete mesh screen net with a steel frame attaches to the door of the vehicle for added protection from the wind and mud.
- Easy to use, it follows the door's movements.
- Facilitates ingress and egress.
- The net zips up and down for added ventilation when required.
- Sold in pairs.

# HMWPE SKID PLATES



## MAVERICK R

2023

### HMWPE Skid Plate Protection Kit

715007373

#### Individual HMWPE Skid Plates

|   |   |           |
|---|---|-----------|
| ① | HMWPE Front A-Arm and Trailing Arm Protectors | 715007183 |
| ② | HMWPE Front Skid Plate                        | 715007313 |
| ③ | HMWPE Underbelly Plate                        | 715007314 |

Our plastic plates glide smoothly and silently over obstacles, offering great protection in rough terrain. Made of abrasion-resistant thermoformed  $\frac{3}{8}$ " (10 mm) thick High Molecular Weight Polyethylene (HMWPE).

- Lighter than aluminum.
- Superior stress crack resistance.
- High-impact strength.

# BUMPERS & GUARDS

## Bumpers

### NEW Trail Front Bumpers

Maverick R

■ 715007803 · Black  
■ 715008763 · Yellow



- Can-Am's largest front bumper protects the headlights and radiator area of the unit.
- Added heavy-duty protection in extreme driving conditions.
- Made of 1.5" (3.8 cm) diameter steel tubing.
- Anti-corrosion coating with durable powder coat finish.
- Combine with the Rock Sliders and Rear Bumper for ultimate protection.
- Features integrated mounting points for lights.
- Winch compatible.

### NEW Desert Front Bumpers

Maverick R

■ 715007311 · Black  
■ 715007691 · Yellow



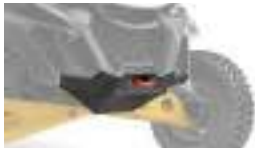
- Sleek and rugged design.
- Provides added protection without sacrificing the agility and performance of the vehicle.
- Made of heavy-duty steel profiled tubing to protect the front of the unit.
- Inside and outside anti-corrosion coating with durable powder coat finish.
- Combine with the Rock Sliders and Rear Bumper for ultimate protection.
- Features integrated mounting points for lights.
- Winch compatible.



## NEW Dune Front Bumpers

Maverick R

■ 715007169 · Black  
■ 715007305 · Raw Metal



- Highly integrated bumper that creates a more pronounced attack angle and provides added protection to the vehicle.
- Allows for better ground clearance.
- The sleek design gives the unit a sportier look.
- Made of heavy-duty steel with a 1/8" (3 mm) aluminum plate.
- Inside and outside anti-corrosion coating with durable powder coat finish.
- Features an integrated Tow Hook.
- Not winch compatible.

## NEW Desert Rear Bumpers

Maverick R

■ 715007172 · Black  
■ 715007694 · Yellow



- Rugged design.
- Provides added protection to the rear of the unit without sacrificing the agility and performance of the vehicle.
- Gives riders extra grip on the bumper and improves accessibility to rear cargo.
- Made of heavy-duty steel profiled tubing.
- Inside and outside anti-corrosion coating with durable powder coat finish.
- Combine with the Rock Sliders and Front Bumper for ultimate protection.

## Rock Sliders

### NEW Rock Sliders

Maverick R

■ 715007170 · Black  
■ 715007693 · Yellow



- Protect the vehicle's sides against obstacles.
- With added grip on top to improve accessibility to the roof cargo.
- Made of unique heavy-duty steel profiled tubing.
- Inside and outside anti-corrosion coating with durable powder coat finish.
- Combine with the Front and Rear Bumpers for ultimate protection.
- Sold in pairs.

### NEW HMW-HDPE Rock Sliders

Maverick R

715008142



- The sleek design gives the vehicle a sportier look.
- Tight integration with the unit's body to provide maximum obstacle clearance and outstanding protection.
- Made of combination of HMWPE and HDPE for extra durability.
- Add the Dune Front Bumper for ultimate protection and integrated lights for optimal visibility.
- Sold in pairs.

## Intrusion Bar

### NEW Front Intrusion Bar

Maverick R

715007312



- The steel intrusion bar matches the vehicle's styling and enhances its visual impact.
- The tube's design doesn't obstruct the rider's line of sight, and reduces blind spots for increased visibility.
- Inside and outside anti-corrosion coating with durable powder coat finish.
- Compatible with the 40" (102 cm) Baja Designs OnX6 Arc LED Light Bar (710006818) and SMART Integrated LED Roof Light (715007322).
- Compatible with all windshields.

# LINQ: EASY ON, EASY OFF CARGO



## MAVERICK R'S LINQ ACCESSORIES

### Mounting location and requirements

| <ul style="list-style-type: none"> <li>• No tools needed: Quickly install and remove accessories by hand</li> <li>• Equip your Can-Am for specialized tasks in no time</li> <li>• Sturdy mounting system that holds up to the roughest terrain</li> </ul>   | Standard Cargo Bed   | LinQ Pivoting Rack<br>715007306   | Adventure Roof Rack<br>715007186  |
|---|--|---|---|
| <b>LinQ Accessories with 16" Base</b> <ul style="list-style-type: none"> <li>• LinQ anchors mounted 16 inches apart, center-to-center.</li> <li>• Lower loading capacity than the LinQ with 36" base accessories.</li> <li>• Can be used on Can-Am ATV and SxS vehicles, Can-Am Spyder and Ryker vehicles, Sea-Doo watercraft and Ski-Doo snowmobiles.</li> </ul> |  |   |   |
| <b>LinQ 4.2 Gal Cooler</b><br>295100698 • White<br>219400964 • Black  | Central position:<br>No further requirements<br>(fit on stock mounted LinQ anchors)<br><br>Other positions:<br>LinQ Base Installation Kit<br><b>715008125</b><br>(1 set needed/accessory)  | LinQ Base Installation Kit<br><b>715008125</b><br>(1 set needed/accessory)  | LinQ Base Installation Kit<br><b>715008125</b><br>(1 set needed/accessory)  |
| <b>LinQ Tool Kit</b><br>715006829   |  |   |   |
| <b>LinQ Tool Box</b><br>715008111   |  |   |   |
| <b>LinQ SR 5.5 Gal (21 L) Bag</b><br>860202449  |  |   |   |
| <b>LinQ 4.5 Gal (17 L) Sport Bag</b><br>860202447   |  |   |   |
| <b>LinQ Modular Box</b><br>715005494 • (10 L)<br>715007112 • (20 L)<br>715006830 • (30 L)   |  |   |   |
| <b>LinQ Roll-Top Bag</b><br>715008110   | <ul style="list-style-type: none"> <li>• Mount on LinQ racks often used by Can-Am ORV vehicles.</li> <li>• Higher loading capacity than the LinQ with 16" base accessories.</li> <li>• Usage is limited to Can-Am ORV vehicles.</li> </ul> | LinQ Base Installation Kit<br><b>715008125</b><br>(2 sets needed/accessory) | LinQ Base Installation Kit<br><b>715008125</b><br>(2 sets needed/accessory) |
| <b>LinQ Accessories with 36" Base</b>   |  |   |   |
| <b>LinQ Cargo Box (53L)</b><br>715006997  |  |   |   |
| <b>LinQ Low Profile Box (63L)</b><br>715007827  |  |   |   |
| <b>LinQ Cargo Basket (90L)</b><br>715005274   |  |   |   |
| <b>LinQ 9.2 Gal (35L) Cooler</b><br>715006998   | <b>LinQ Cargo Accessories</b>  | LinQ Base Installation Kit<br><b>715008125</b><br>(2 sets needed/accessory) | LinQ Base Installation Kit<br><b>715008125</b><br>(2 sets needed/accessory) |
| <b>LinQ Trunk Box (96L)</b><br>715007182  | No further requirements<br>(fit on stock mounted LinQ anchors)   |   |   |
| <b>LinQ Side Cargo Boxes (13.5L)</b><br>715007372   |  |   |   |
| <b>LinQ Holders</b>   |  | LinQ Base Installation Kit<br><b>715008125</b><br>(1 set needed)            | Side wall installation<br>LinQ Adapters<br><b>715003058</b>                 |
| <b>LinQ Gear Grips</b><br>715005340   | No further requirements  |   |   |
| <b>LinQ Tool Holder</b><br>715007358  |  |   |   |

# LinQ Accessories with 16" Base

|                         |            |                           |
|-------------------------|------------|---------------------------|
| <b>LinQ Modular Box</b> | Maverick R | <b>715005494</b> · (10 L) |
|                         |            | <b>715007112</b> · (20 L) |
|                         |            | <b>715006830</b> · (30 L) |



- Allows stacking of other modular boxes to always have the right gear accessible.
- Always have the right box size to fit everything.
- Can be installed on any LinQ base with a 16" width.
- See table for installation location and requirements.

|   |            |                  |
|---|------------|------------------|
| <b>Thermal Insert for LinQ Modular Box (10 L)</b> | Maverick R | <b>219401110</b> |
|---|------------|------------------|



- Insulated liner.
- Fits very well in the LinQ Modular Box (10 L).
- Can contain seven 355 ml cans.
- Keeps ice cold for one day.
- Interior dimensions: 9" L x 17" W x 2½" H.

|                      |            |                  |
|----------------------|------------|------------------|
| <b>LinQ Tool Box</b> | Maverick R | <b>715008111</b> |
|----------------------|------------|------------------|



- High precision injected HDPE construction provides rigidity and durability.
- 5 gal (19 L) maximum capacity.
- Weather-resistant, sealed and lockable cover.
- Easy one-second on/off tool-less system.
- All the benefits of LinQ—simple, fast and secure.
- See table for installation location and requirements.

|                      |            |                  |
|----------------------|------------|------------------|
| <b>LinQ Tool Kit</b> | Maverick R | <b>715006829</b> |
|----------------------|------------|------------------|



- Includes:
  - Cutter pliers
  - Long-nose pliers
  - Locking pliers
  - Ratchet wrench ¾" drive
  - 6" ratchet extension
  - Integrated CVT belt storage location (belt not included)
  - Long-socket 19 mm ¾" drive - 6 pts
  - Socket 18 mm ¾" drive
  - Long-socket 17 mm ¾" drive - 6 pts
  - Socket 15 mm ¾" drive
  - Socket 13 mm ¾" drive
  - Socket 10 mm ¾" drive
  - Socket 8 mm ¾" drive
  - Combined wrench 19 mm
  - Combined wrench 18 mm
  - Combined wrench 15 mm
  - Combined wrench 13 mm
  - Combined wrench 10 mm
  - Combined wrench 8 mm
  - Socket Torx T40 ¾" drive
  - Socket Torx T30 ¾" drive
  - Socket Torx T20 ¾" drive
  - Breaker bar ¾" drive
- See table for installation location and requirements

|                                   |            |  |
|-----------------------------------|------------|--|
| <b>LinQ 4.2 Gal (16 L) Cooler</b> | Maverick R | <ul style="list-style-type: none"> <li>■ <b>219400964</b> · Black</li> <li>■ <b>295100698</b> · White</li> </ul> |
|-----------------------------------|------------|--|



- All the benefits of LinQ—simple, fast and secure.
- Rotomolded construction for exceptional rigidity and durability.
- Premium-quality foam insulation for optimal ice retention.
- Uses LinQ mounting system (Patent US 8777531 and US 8875830).
- Easy one-second on/off tool-less system.
- Can contain twenty 355 ml cans.
- Keeps ice cold for three days.
- Exterior dimensions: 13" L x 20" W x 10" H.
- Interior dimensions: 9" L x 17" W x 7" H.
- See table for installation location and requirements.

|                                      |            |                  |
|--------------------------------------|------------|------------------|
| <b>LinQ 4.5 Gal (17 L) Sport Bag</b> | Maverick R | <b>860202447</b> |
|--------------------------------------|------------|------------------|



- 17-liter (4.5 US gallon, 1,037 cu. in.) capacity.
- Rigid bottom, semi-rigid top.
- See table for installation location and requirements.

**SR 5.5 Gal (21 L) LinQ Bag**

Maverick R

**860202449**

- All the benefits of LinQ—simple, fast and secure.
- Semi-rigid expandable bag.
- 5.5 gal (21 L) capacity.
- Utilizes LinQ mounting system (Patent US 8777531 and US 8875830).
- Easy one-second on/off tool-less system.
- See table for installation location and requirements.

**LinQ Roll-Top Bag**

Maverick R

**715008110**

- Fully waterproof roll-top dry bag will securely store and confine your equipment.
- LinQ mounted using heavy-duty rigid plastic base.
- High capacity storage solution (40 L).
- Bottom foam liner for additional equipment protection.
- Integrated handle for easy transportation on/off the vehicle.
- Dimensions: 14" L x 19" W x adjustable H.
- See table for installation location and requirements.

**LinQ Accessories with 36" Base****NEW LinQ 9.2 Gal (35 L) Cooler**

Maverick R

**715006998**

- LinQ-mounted for efficient and secure storage, locked in place with only a quarter turn.
- Easy to install, easy to remove using the LinQ system.
- Installation in LinQ 36" configuration.
- Made of polyethylene for exceptional rigidity and durability.
- Storage capacity of 35 L.
- Lock the cooler on the vehicle using the LinQ Lock (860201968).
- Premium-quality foam insulation for optimal ice retention.
- Option to add a 5-slot LinQ Lite Rail on the side and at the rear of the cooler.
- A dry basket is included to protect your food from water.
- Drain plug at the bottom to get rid of excess water.
- The new ergonomic and resistant latch system ensures the top is tightly sealed.
- Innovative way to hold 12 cans (355 ml).
- Molded-in handles for quick installation and removal.

**LinQ Cargo Box (53 L)**

Maverick R

**715006997**

- Made of polyethylene.
- Storage capacity of 14 gal (53 L).
- Easy to install and remove with the LinQ system.
- New ergonomic and resistant latch system offers excellent sealing.
- Possibility to install LinQ 16" accessories on the cover and increase the cargo capacity.
- Ability to install Tool Holders (715008896) on the box.
- Lockable with a lock on the front of the box (2 keys included).

**NEW LinQ Low Profile Box (63 L)**

Maverick R

**715007827**

- Made of impact-resistant injected polypropylene and weatherproof, this box has a storage capacity of 63 L.
- LinQ-mounted for efficient and secure storage, it is locked in place with only a quarter turn. Easy to install, easy to remove using the LinQ system.
- Can be installed in several 16" configurations, or in a 36" configuration.
- LinQ 16" accessories can be installed on the cover to increase cargo capacity.
- Easily carried with the rigid handle. The anti-vibration system prevents the handle from moving while riding.
- Support feet at hinge level so the box can stand on its own.
- The compact design allows for maximum rear field of vision.
- Features a lock on the front of the box (two keys included).

**LinQ Cargo Basket (90 L)**

Maverick R

**715005274**

- Made of polyethylene.
- Storage capacity of 23 gal (90 L).
- Easy to install and remove with the LinQ system.
- Can already be installed on your vehicle thanks to the stock mounted LinQ anchor.
- 6 handles on the contour to easily install bungee cords.
- Ability to install Tool Holders (715008896) on the basket.

## LinQ Cargo Accessories

### NEW LinQ Trunk Box (96 L)

Maverick R

715007182

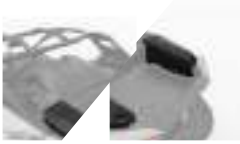


- Weatherproof box made of impact-resistant injected polypropylene reinforced with glass fiber.
- Features a maximum storage capacity of 96 L and 15 kg.
- Easy to install, easy to remove with the LinQ system.
- Can already be installed on your vehicle thanks to the stock mounted LinQ anchor.
- Ability to install in conjunction with the LinQ Side Cargo Boxes (13.5 L) for a complete cargo solution.
- Compatible with the Pivoting Rack.

### NEW LinQ Side Cargo Boxes (13.5 L)

Maverick R

715007372



- Weatherproof box made of impact-resistant injected polypropylene reinforced with glass fiber.
- Features a maximum storage capacity of 13.5 L each and 5 kg.
- Easy to install, easy to remove thanks to the LinQ system.
- Possibility of installing up to two LinQ 16" accessories between the LinQ Side Cargo Boxes (13.5 L).
- Ability to install in conjunction with the LinQ Trunk Box (96 L) for a complete cargo solution.
- Compatible with the Pivoting Rack.

## LinQ Holders

### LinQ Tool Holder

Maverick R

715007358



- Ultra-versatile tool holder.
- Convenient swivel-latch allows tools to be stored in any orientation.
- Sold in pairs.

### LinQ Gear Grips

Maverick R

715005340



- Durable and flexible grips provide a custom fit for a variety of items from 1" to 4" (2.5 cm to 10 cm) in diameter.
- Heavy-duty design for carrying bows, fishing poles, rakes, farm tools and more.
- Quick-release button opens grip quickly for easy access to gear.
- Heavy-duty base system built for the toughest adventures.
- Make transporting your tools a snap by combining the LinQ Gear Grips with the LinQ system.
- 360° orientation.
- Sold in pairs.

## LinQ Mounting

### LinQ Adaptor

Maverick R

715003058



- Sold in pack of 4.
- Allows the installation of the LinQ Tool Holder on the Adventure Roof Rack.

### LinQ Base Installation Kit

Maverick R

715008125



- Unique mounting fastener usable on any LinQ system accessory.
- Included: 2 Cargo LinQ bases and hardware.

### LinQ Lock

Maverick R

860201968



- Simple way to securely lock most LinQ accessories.
- Lock cover protects lock from the elements.
- Corrosion resistant.
- Pack of 1, includes 2 keys.
- Not compatible with LinQ 4.2 US Gal (16 L) Cooler, LinQ Tool Box, LinQ Tool Holder or LinQ Gear Grips.

## Spare Tire Ratchet Tie-Downs

Maverick R

280000955



- 3-way ratcheting tie-down strap with loop ends.
- Designed to securely hold spare tires on accessories equipped with integrated spare tire attachment points.
- Adjustable to accommodate most common UTV tire sizes.
- Ratchet and junction ring made of durable zinc-plated steel.
- Required for spare tire attachment on Adventure Roof Rack.

# RACKS & STORAGE

## Racks

### NEW LinQ Pivoting Rack

Maverick R

715007306



- Strong and durable, the LinQ Pivoting Rack helps keep cargo securely in place.
- Anti-corrosion coating with durable powder coat finish.
- Gaz cylinder pivot action, locks in the open position.
- Possibility of installing up to three LinQ 16" accessories on top of the rack.
- Compatible with LinQ accessories for installation under the rack.
- Features anchor points for the spare-tire attachment.
- Spare Tire Tie-Downs sold separately.

### NEW Adventure Roof Rack

Maverick R

715007186



- The ideal cargo solution. Pack all the gear you need to take on any off-road experience.
- Built using lightweight 1.25" (3.2 cm) diameter steel tubing.
- Supports loads of up to 75 lb (34 kg).
- This roof rack features a height adjustment setting to precisely accommodate a stock roof or a roof with Cold Air Roof Scoop.
- Integrated mounting points for lights.
- Features anchor points for a spare tire attachment.
- Can be completed with LinQ Adaptor (715003058) on the side.
- The Spare Tire Tie-Downs sold separately.
- Sport roof is required for installation.

## Storage

### NEW Shoulder Storage Bag

Maverick R

715007371



- This weather-resistant bag holds your gear safely and securely while you ride.
- Attach the bag between the seats to maximize unused space and increase the vehicle's cargo capacity.
- This bag has a 1.5 gal (6 L) capacity and is equipped with outer netting compartments and a flexible inner net to hold items in place.
- The thermoformed base attaches to the doors, allowing the bags to be installed.
- Its soft construction makes the bag flexible enough to fit odd-shaped loads.

### NEW Overhead Storage Bag

Maverick R

715007379



- This weather-resistant bag holds your gear safely and securely while you ride.
- Makes smart use of the overhead space and increases the vehicle's cargo capacity by 2.3 gal (9 L).
- The thermoformed base attaches to the roof for easy bag installation and the soft construction makes the bag flexible enough to fit oddly shaped loads.
- Features a hanging function for easier access to the items in the bag and an integrated net for even more storage space.
- Contains two sections: a fixed bag and a detachable bag that can be carried.
- Easily access your smartphone using the touchscreen-compatible clear front pocket.

### NEW Upper Door Storage Bags

Maverick R

715008065



- These weather-resistant bags hold your gear safely and securely while you ride.
- The Door Bags fit in the upper door opening to increase your vehicle's cargo space.
- Each bag is designed as a 1.3 gal (5 L) capacity pocket and is equipped with inner netting compartments.
- The thermoformed base attaches to the doors, allowing the bags to be installed.
- Its soft construction makes the bag flexible enough to fit odd-shaped loads.
- Added elbow cushions for extra comfort.
- Sold in pairs.

**NEW Lower Door Storage Bags**

Maverick R

**715007324**

- These weather-resistant bags hold your gear safely and securely while you ride.
- The Door Bags fit in the lower door opening to increase the vehicle's cargo space.
- Each bag is designed as a 1.3 gal (5 L) capacity pocket and equipped with inner netting compartments.
- The thermoformed base attaches to the doors, allowing the bags to be installed.
- Its soft construction makes the bag flexible enough to fit odd-shaped loads.
- Added cushions for extra comfort.
- Sold in pairs.
- Not compatible with Door Speakers (Level 5 Audio System).

**NEW Passenger Storage Seat Bag**

Maverick R

**715008080**

- This weather-resistant bag holds your gear safely and securely while you ride.
- Bag settling on the passenger seat to increase the vehicle's cargo capacity.
- This bag features a 14.5 gal (55 L) storage capacity and is divided into two compartments.
- The top compartment is insulated to keep your beverages cold and includes two cup holders.
- Additional pocket inside for additional storage, such as a cell phone.
- The bottom compartment is accessible from both sides and serves as a large pocket for storing various items.
- The detachable pocket at the front of the bag can be used as a garbage bag.

**NEW Back Panel Storage Net**

Maverick R

**715008312**

- Storage net behind the passenger seat for more storage.

**NEW Bed Side Doors**

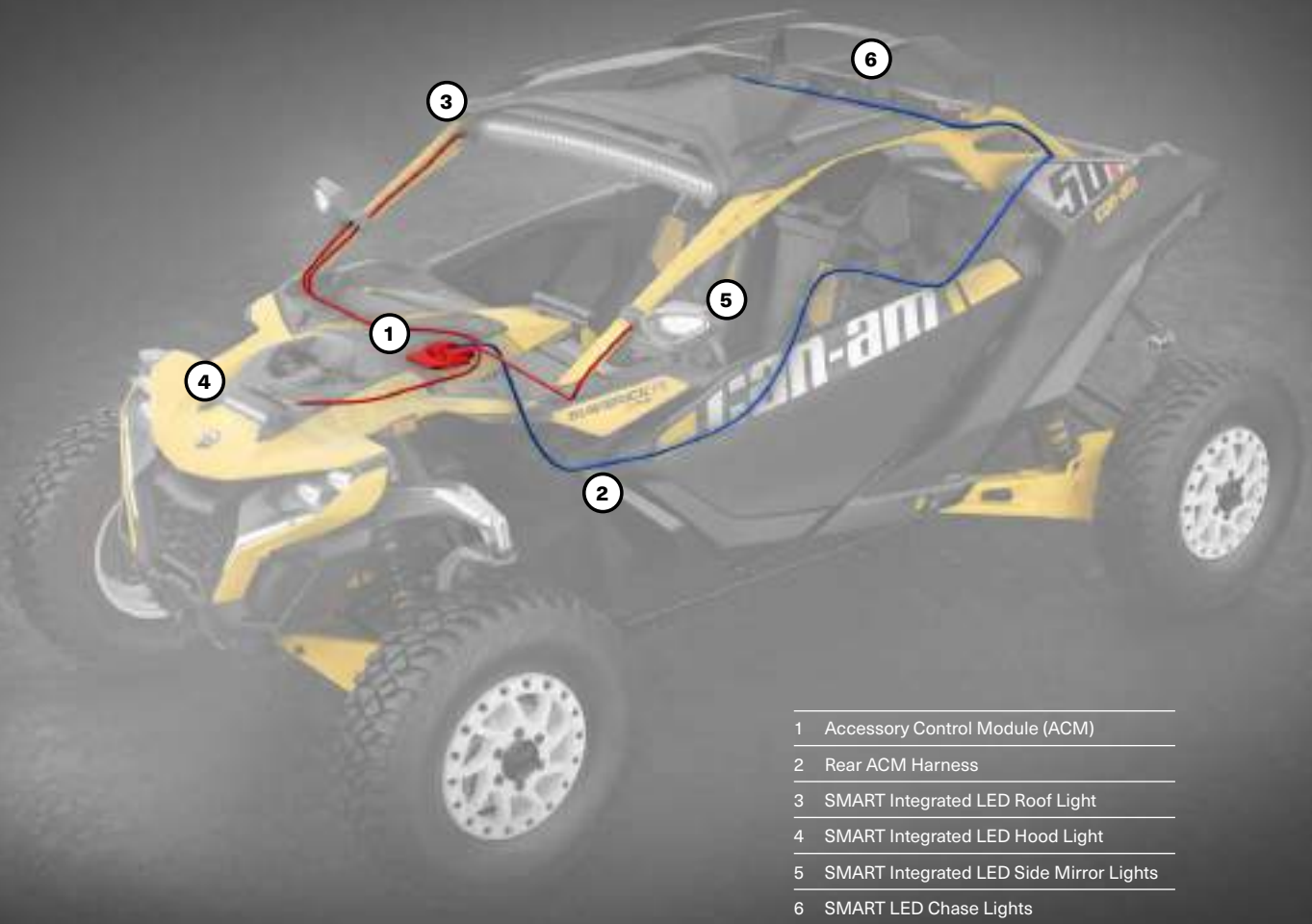
Maverick R

**715009154**

- Creates a storage solution out of the rear bed cavities of the unit.
- Perfect for housing trail and safety items that remain on the vehicle.
- Includes two Bed Side Doors, one for each side.

# INTELLIGENCE MEETS ACCESSORIES

Maximize your riding experience with live ECU information from your vehicle.



- 1 Accessory Control Module (ACM)
- 2 Rear ACM Harness
- 3 SMART Integrated LED Roof Light
- 4 SMART Integrated LED Hood Light
- 5 SMART Integrated LED Side Mirror Lights
- 6 SMART LED Chase Lights

## Can-Am SMART Accessories are an industry first!

Driven by the Can-Am ACM (Accessory Control Module), the SMART accessories react to sensors in the vehicle. For example, lights change from Flood to Spot when you speed, and follow a curve's direction based on steering input.



# ACM & SMART ACCESSORIES

## Accessory Control Module (ACM)

### NEW Accessory Control Module

Maverick R

715009796



- Bringing the SMART to accessories using live vehicle ECU information to maximize your accessory experience.
- Connect your accessories to the 10.25" Color Touchscreen Display.
- Easy accessory installation (plug and play).
- Creates an ecosystem that makes installing accessories quicker and easier.
- Includes ACM Front Harness to connect front-mounted SMART accessories to the Accessory Control Module (two auxiliary connectors available).
- Requires ACM Rear Harness (715009268) to connect rear-mounted SMART accessories to the Accessory Control Module.

### NEW Rear ACM Harness

(Not Illustrated)

Maverick R

715009268

- Required to connect rear-mounted accessories and rear chase lights to the ACM.
- Creates an ecosystem that makes installing accessories quicker and easier.
- Five auxiliary connectors are available.

### NEW SMART Control Center for ACM

Maverick R

715007712



- Control the accessories with the selection of different modes, the illuminated halo around the button indicates the active mode.
- Icons illuminate when accessories are activated.
- Make accessory control changes without having to take your eyes off the trail by choosing the accessory button required (quick access).
- All Front LED Off button to turn off all front lights with one click. Remembers the last programmed setups when this button is pressed again.
- 6 pre-programmed buttons (Light Bars, PowerFlip Windshield, All Front LED Off, Corner Lights) and 8 programmable buttons to customize according to the accessories installed.

## SMART Accessories

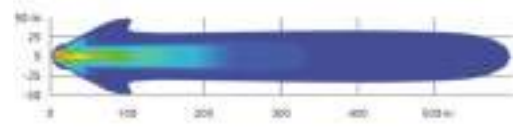
### NEW SMART Integrated LED Roof Light

Maverick R

715007322



22,100 lumens



- Mounted under the roof for a signature look.
- Windshield compatible.
- Intensity varies (increases or decreases) according to the speed of the vehicle with the installation of the Accessory Control Module (ACM) (Spot/Flood ratio).
- Spot/Flood combo beam.
- 22,100 lumens.
- Off/Low/High (switch activated).
- Off/Low/High/SMART Automatic Mode (Accessory Control Module (ACM) activated).
- Accessory Control Module (715009796) is required for SMART functionality.
- Electric Harness (715008209) required to hook up and operate the Integrated LED Roof Light (715007322) for on/off function when ACM is not installed. Sold separately.

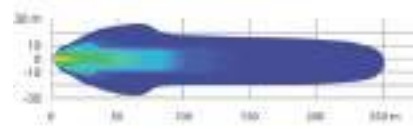
### NEW SMART Integrated LED Hood Light

Maverick R

715007378



5,250 lumens

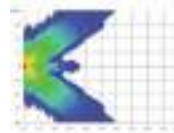


- Mounted flush inside the hood scoop for a signature look.
- Intensity varies (increases or decreases) according to the speed of the vehicle with the installation of the Accessory Control Module (ACM) (Spot/Flood ratio).
- Spot/Flood combo beam.
- 5,250 lumens.
- Off/Low/High (switch activated).
- Off/Low/High/SMART Automatic Mode (Accessory Control Module (ACM) activated).
- Accessory Control Module (715009796) is required for SMART functionality.
- Wiring harness required for on/off function when ACM is not installed. Sold separately.

**NEW SMART Integrated LED Side Mirror Lights**

Maverick R

715007185



- Light up corners.
- Increase the width of the beams and illuminate the wheels for increased visibility.
- Wide flood beam.
- 3,000 lumens for each light.

- Left & right dynamic lighting with Accessory Control Module (ACM) install. Follow steering wheel input.
- Accessory Control Module (715009796) is required for SMART functionality.
- Wiring harness required for on/off function when ACM is not installed. Sold separately.
- Require Aluminum Side Mirrors (715007363).
- Electric Harness required (715008212) to hook up and operate the Integrated LED Side Mirror Lights for on/off function when ACM is not installed. Sold separately.

**NEW SMART LED Chase Lights**

Maverick R

715007727



- Designed by Can-Am to make you visible to vehicles riding behind you, especially in dusty or harsh conditions.
- Four modes available:
  - Trail Mode: serves as a tail light and as a brake light.
  - Chasing Mode: displays amber light pattern and serves as a brake light.
  - Work Mode: white light to light up your cargo bed.
  - Reverse Mode (when connected with Accessory Control Module (ACM)): serves as a back up light.

- Modular to allow installation with rear roll cage mounted accessories.
- Plug-and-play installation with the Accessory Control Module (ACM).
- Accessory Control Module (715009796) and Rear ACM Harness (715009268) are required for SMART functionality.
- Electric Harness (715008210) required to hook up and operate the LED Chase Lights (715007727) for a non-smart function when ACM is not installed.

**Intermittent Wiper & Washer Kit**

Maverick R

715007173



- An ideal way to keep your windshield clear in the rain, or while riding through mud and water.
- The wiper mechanism and washer fluid dispenser are perfectly concealed on the vehicle.
- The wiper and washer fluid dispenser installs at the bottom of the windshield for maximum visibility.

- For use on Glass or Hardcoated Windshields.
- Intermittent wiper speed feature available when the kit is installed in combination with ACM.
- Electric Harness (715008855) required to hook up and operate the Wiper & Washer Kit (715007173) for on/off function when ACM is not installed.

# LIGHTS

## SMART Lights

| SMART LIGHTS WHEN ACM IS INSTALLED     |  |  |   |   |
|--|--|--|---|---|
| SMART functionality                    | SMART Integrated LED Roof Light<br>715007322                       | SMART Integrated LED Hood Light<br>715007378 | SMART Integrated LED Side Mirror Lights<br>715007185  | SMART LED Chase Lights<br>715007727   |
|  | Accessory Control Module (ACM) with Front ACM Harness<br>715009796 |  | Aluminum Side Mirrors<br>715007363<br>+<br>Accessory Control Module (ACM) with Front ACM Harness<br>715009796 | Accessory Control Module (ACM)<br>715009796<br>+<br>Rear ACM Harness<br>715009268 |
| SMART LIGHTS WHEN ACM IS NOT INSTALLED |  |  |   |   |
| ON/OFF functionality                   | SMART Integrated LED Roof Light<br>715007322                       | SMART Integrated LED Hood Light<br>715007378 | SMART Integrated LED Side Mirror Lights<br>715007185  | SMART LED Chase Lights<br>715007727   |
|  | Wiring Harness<br>715008209  | Wiring Harness<br>715008211                  | Aluminum Side Mirrors<br>715007363<br>+<br>Wiring Harness<br>715008212  | Wiring Harness<br>715008210   |

\*All lights are intended for off-road use only.

# BAJA Lights

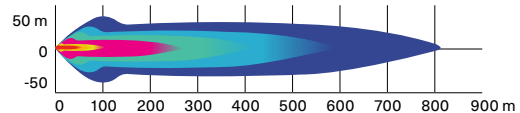
|   |  | 2 Choose your lights  |  |  |   |  |
|---|--|---|--|--|---|--|
| 1 Choose your mount point                                     |  | BAJA LIGHTS WHEN ACM IS INSTALLED   |  |  |   |  |
|   |  | 40" (102 Cm)<br>Baja Designs OnX6 Arc<br>LED Light Bar<br>710006818   | 10" (25 Cm)<br>Baja Designs OnX6<br>LED Light Bar<br>710006819 | Baja Designs<br>XL Sport LED Lights<br>710006821 | Baja Designs<br>Squadron Sport<br>LED Lights<br>710004648 | Baja Designs<br>XL80 LED Lights<br>710005041 |
| <b>Desert Front Bumper</b><br>(715007311 or 715007691)        | N/A  | LED Light Bars<br>ACM Adaptor<br>715008213  |  | LED Lights<br>ACM Adaptor<br>715007715           | LED Lights<br>ACM Adaptor<br>715007715                    | LED Lights<br>ACM Adaptor<br>715007715       |
| <b>Trail Front Bumper</b><br>(715007803 or 715008763)         | N/A  | N/A   |  |  |   |  |
| <b>Roof with Light Support Bar</b><br>(715003529)             | N/A  | N/A   |  |  |   |  |
| <b>Roof Light Mounting Kit</b><br>- Low Position (715008585)  | LED Light Bars<br>ACM Adaptor<br>715008213 | N/A   | N/A  | N/A  | N/A   | N/A  |
| <b>Roof Light Mounting Kit</b><br>- High Position (715007930) |  | N/A   | N/A  | N/A  | N/A   |  |
|   |  | 2 Choose your lights  |  |  |   |  |
| 1 Choose your mount point                                     |  | BAJA LIGHTS WHEN ACM IS NOT INSTALLED   |  |  |   |  |
|   |  | 40" (102 Cm)<br>Baja Designs OnX6 Arc<br>LED Light Bar<br>710006818   | 10" (25 Cm)<br>Baja Designs OnX6<br>LED Light Bar<br>710006819 | Baja Designs<br>XL Sport LED Lights<br>710006821 | Baja Designs<br>Squadron Sport<br>LED Lights<br>710004648 | Baja Designs<br>XL80 LED Lights<br>710005041 |
| <b>Desert Front Bumper</b><br>(715007311 or 715007691)        | N/A  | Wiring Harness<br>715008863   |  | Wiring Harness<br>715008865                      | Wiring Harness<br>715008865                               | Wiring Harness<br>715008865                  |
| <b>Trail Front Bumper</b><br>(715007803 or 715008763)         | N/A  | N/A   |  |  |   |  |
| <b>Roof with Light Support Bar</b><br>(715003529)             | N/A  | Wiring Harness<br>715008863   |  |  |   |  |
| <b>Roof Light Mounting Kit</b><br>- Low Position (715008585)  | Wiring Harness<br>715008864                | N/A   | N/A  | N/A  | N/A   | N/A  |
| <b>Roof Light Mounting Kit</b><br>- High Position (715007930) |  | N/A   | N/A  | N/A  | N/A   |  |
| <b>3 Order</b>  |  | <b>Order all part numbers in intersecting box</b><br><i>*Note: When installing more than one light kit, additional light power cable or mounting kit is required.</i> |  |  |   |  |

\*All lights are intended for off-road use only.

**40" (102 cm) Baja Designs OnX6 Arc LED Light Bar** | Maverick R | **710006818**



29,000 lumens

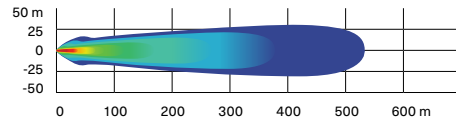


- 252 W light bar producing 29,000 lumens.
- Equipped with 24 Cree XM-L2 LEDs.
- Driving/Combo light pattern for smooth blend of light for both near field applications and distance.
- Designed for installation onto Light Support Bar equipped roofs.
- Requires Light Power Cable and Light Support Bar.
- ACM Adaptor required (715008213) to connect the Baja Designs LED Light Bars to the ACM harness.
- Electric Harness (715008864) required to hook up and operate the 40" (102 cm) Baja Designs OnX6 Arc LED Light Bar (710006818) for on/off function when ACM is not installed.
- Baja Designs Light Mounting Kit (715007930 or 715008585) is required for installation.
- See table for installation location and requirements.

**Baja Designs 10" (25 cm) OnX6 LED Light Bar** | Maverick R | **710006819**



12,460 lumens

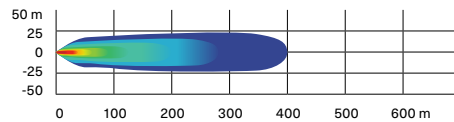


- 108 W light bar producing 12,460 lumens.
- Equipped with 6 Cree XM-L2 LEDs.
- Driving/Combo light pattern for smooth blend of light for both near field applications and distance.
- Dual intensity (high/low) settings.
- Requires Baja Designs Light Power Cable.
- ACM Adaptor required (715008213) to connect the Baja Designs LED Light Bars to the ACM harness.
- Electric Harness (715008863) required to hook up and operate the 10" (25 cm) Baja Designs OnX6 LED Light Bar (710006819) for on/off function when ACM is not installed.
- See table for installation location and requirements.

## Baja Designs XL80 LED Lights

Maverick R

710005041



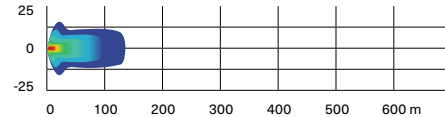
- 80 W per spot producing 9,500 lumens.
- Equipped with 4 Cree XHP50 LEDs per spot.
- Dual intensity (high/low) settings.
- Driving/combo light pattern for smooth blend of light for both near field applications and distance.
- Require Baja Designs Light Power Cable.
- Sold in pairs.

- Dimensions: 4.5" x 4.5" (11.4 cm x 11.4 cm).
- ACM Adaptor required (715007715) to connect the Baja Designs LED Lights to the ACM harness.
- Electric Harness (715008863) required to hook up and operate the Baja Designs XL80 LED Lights (710005041) for on/off function when ACM is not installed.
- See table for installation location and requirements.

## Baja Designs Squadron Sport LED Lights

Maverick R

710006820



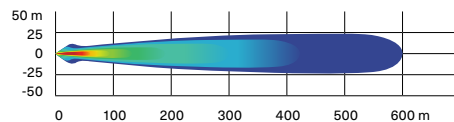
- 26 W per spot producing 3,150 lumens.
- Equipped with 4 Cree XP-G2 LEDs per spot.
- Wide cornering light pattern designed specifically for cornering, dust and/or fog conditions.
- Sold in pairs.

- Dimensions: 3" x 3" (7.6 cm x 7.6 cm).
- Electric Harness (715008865) required to hook up and operate the Baja Designs Squadron Sport LED Lights (710006820) for on/off function when ACM is not installed.
- See table for installation location and requirements.

## Baja Designs XL Sport LED Lights

Maverick R

710006821



- 26 W per spot producing 3,150 lumens.
- Equipped with 4 Cree XP-G2 LEDs per spot.
- High Speed Spot features a longer and narrower beam focus for illumination farther down.
- Require Baja Designs Light Power Cable.
- Sold in pairs.

- Dimensions: 4.5" x 4.5" (11.4 cm x 11.4 cm).
- ACM Adaptor required (715007715) to connect the Baja Designs LED Lights to the ACM harness.
- Electric Harness (715008865) required to hook up and operate the Baja Designs XL Sport LED Lights (710006821) for on/off function when ACM is not installed.
- See table for installation location and requirements.

## NEW Baja Designs Light Mounting Kit - High Position

Maverick R

715007930



- Mounting system for 40" (102 cm) Baja Designs OnX6 Arc LED Light Bar.
- Compatible with the Cold Air Roof Scoop.

## NEW Baja Designs Light Mounting Kit - Low Position

Maverick R

715008585



- Mounting system for 40" (102 cm) Baja Designs OnX6 Arc LED Light Bar.
- Not compatible with the Cold Air Roof Scoop.



# AMPLIFYING THE MAVERICK EXPERIENCE WITH JL AUDIO

## AUDIO SYSTEMS

### NEW Can-Am JL Audio System - Level 5

Maverick R

715007957



- Orchestrated for outstanding sound quality and calibrated to enhance your audio experience.
- Designed to fit the vehicle perfectly for a fully integrated look.
- Designed to be Can-Am tough in the most demanding riding conditions.
- Controlled by the 10.25" Color Touchscreen Display or by the Can-Am JL Audio Source Unit.

- Made using premium JL Audio components, including six 6.5" (165 mm) speakers (two dash, two door, and two surround speakers), as well as two 10" (254 mm) under-seat 250 W subwoofers that will enhance both the driver's and the passenger's experience.
- Uses one MX500/4 to power up our six speakers, and one MX500/1 to feed the under-seat subwoofers.
- Complements the Can-Am Audio Roof - Level 4 (715007309).

### NEW Can-Am JL Audio Roof - Level 4

Maverick R

715007309



- Full roof with premium JL Audio System for Maverick R.
- Features fully sealed and waterproof components and construction.
- Easy to install and connect.
- Controlled by the 10.25" Color Touchscreen Display or by the Can-Am JL Audio Source Unit.
- Its weatherproof components include four 7.7" coaxial speakers and a 500-watt amplifier.
- The system is expertly tuned for exceptional sound when you're riding in your Maverick R.

- Speakers include an adjustable RGB LED cone illumination, controlled via an app on your smartphone.
- Specific to your type of riding.
- When combined with the Can-Am Audio System - Level 3 (715007954) or Level 5 (715007957), it provides the ultimate sound experience.
- Not compatible with the Adventure Roof Rack (715007186) or the Cold Air Roof Scoop (715008280).

### NEW Can-Am JL Audio System - Level 3

Maverick R

715007954



- Orchestrated for outstanding sound quality and calibrated to enhance your audio experience.
- Designed to fit the vehicle perfectly for a fully integrated look.
- Designed to be Can-Am tough in the most demanding riding conditions.
- Controlled by the 10.25" Color Touchscreen Display or by the Can-Am JL Audio Source Unit.

- Made using premium JL Audio components, including four 6.5" (165 mm) speakers (two dash and two surround speakers), and a 10" (254 mm) under-seat 250 W subwoofer that will enhance both the driver's and the passenger's experience.
- Uses one MX280/4 to power up our four speakers, and one MX500/1 to power up the under-seat subwoofer.
- Easy to install, with the option to add a second subwoofer (715007310).
- Complements the Can-Am Audio Roof - Level 4 (715007309).

**NEW Can-Am JL Audio Roof Flip Kit**

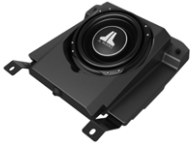
Maverick R

**715008164**

- Combines with the Can-Am JL Audio Roof - Level 4 (715007309) for Flip option.
- Not compatible with the Cold Air Roof Scoop and the Roof Rack.

**NEW Can-Am JL Audio Subwoofer**

Maverick R

**715007310**

- Orchestrated for outstanding sound quality and calibrated to enhance your audio experience.
- Designed to be Can-Am tough in the most demanding riding conditions.
- Easy to install, this 10" (254 mm) under-seat 250 W subwoofer enhances both the driver's and the passenger's experience.
- When combined with the Can-Am audio system - Level 3 (715007954) or with the Can-Am audio roof - Level 4 (715007309), this premium JL Audio component creates the ultimate sound experience.
- To add a subwoofer to the Can-Am JL Audio Roof - Level 4, a Can-Am JL Audio Amplifier (715007714) is required.

**NEW Can-Am JL Audio Amplifier**

Maverick R

**715007714**

- Orchestrated for outstanding sound quality and calibrated to enhance your audio experience.
- Designed to fit the vehicle perfectly for a seamless integration.
- Designed to be Can-Am tough in the most demanding riding conditions.
- This MX500/1 is a premium JL Audio component, and is used to feed one or two 250 W under-seat subwoofers.
- When combined with the Can-Am Audio Roof - Level 4 (715007309), it creates the ultimate sound experience.
- To add a subwoofer to the Can-Am JL Audio Roof - Level 4, this item is required.
- Easy to install, mounting support included.

**NEW Can-Am JL Audio Source Unit**

Maverick R

**715008230**

- Required with all Can-Am Audio JL levels installed on vehicles without 10.25" Color Touchscreen Display.
- Designed to fit the vehicle perfectly for a fully integrated look.
- AM/FM/Bluetooth compatible.

# ELECTRICAL & ELECTRONIC ACCESSORIES

**NEW Electronic Device Holder**

Maverick R

**715007176**

- Increases the storage capacity of the glovebox by 1 gal (4 L), with secure magnetic adjustable support for your electronic device.
- Robust injected fiber-reinforced-polypropylene construction allows for the right fit and easy installation.
- Magnet 10 times stronger than any electronic device's weight, ride through rough terrain confidently.
- 2 possible positions for your electronic device: Portrait & Landscape. Adjustable support with 2 positions: facing the passenger or towards the pilot for an improved driving experience and immersion.
- Includes everything needed for installation on your favorite electronic devices: 2 pre-assembled Can-Am plates with 3M multi-surface adhesive.

**NEW Cellphone Holder**

Maverick R

**715008786**

- Water resistant door allows for perfect phone positioning.
- Features capacitive and resistive touch screen technology.
- Spring system in back plate automatically adjusts for thickness.
- Fits all cellphones within 7.2" (185 mm) x 3.3" (85 mm) x 0.6" (15 mm) dimensions.
- Works with almost all charger wires.
- Does not include cellphone or charging wires.
- Requires the Electronic Device Holder (715007176) for the Cellphone Holder to be supported.

**Color Touchscreen Display Protector**

Vehicle equipped with 10.25 in. Color Touchscreen Display

**860202680**

- Provides additional protection for the digital display 10.25 in. touchscreen.
- Protects from scratches caused by ice, rocks, branches or other small debris.
- Anti-glare treatment to ensure good visibility.
- Includes cleaning tools: wet wipe, dry wipe, dust absorber and soft cloth.

**NEW Auxiliary Battery Installation Kit**

Maverick R

**715007837**

- Allows the rider to add a second battery and/or replace the original battery (18 Ah or 30 Ah) for a dual battery setup. Recommended to power auxiliary electrical components such as sound systems or winches.
- Automatic rundown protection.
- Installs behind the seat for easy access.
- Requires the purchase of a second battery and battery hardware (not included and sold separately).
- Equipped with an electronic module that prevents the auxiliary electrical components from draining the original battery.

# WINCHES

**Can-Am HD Winches****Can-Am HD 4500 Winch**

Maverick R

**715006416**

- Ergonomic clutch handle.
- Rugged all-steel gears and bushings for more torque and durability.
- Automatic 100% load-holding brake.
- Sealed solenoid for all-weather protection.
- Weather sealed corded remote and dash mounted switch.
- EC compliant.
- Pulling strength capability of 4,500 lb (2,041 kg).
- 43' of 1/8" (13.1 m of 6.3 mm) wire steel cable.
- Heavy-duty 4-way roller fairlead.
- Winch Electrical Harness (715008850), Winch Roller Fairlead Spacer (715008922) and winch compatible front bumper are required.

**Can-Am HD 4500-S Winch**

Maverick R

**715006417**

- Ergonomic clutch handle.
- Rugged all-steel gears and bushings for more torque and durability.
- Automatic 100% load-holding brake.
- Sealed solenoid for all-weather protection.
- Weather-sealed corded remote and dash mounted switch.
- Pulling strength capability of 4,500 lb (2,041 kg).
- 50' of 1/4" (15.2 m of 6.35 mm) synthetic rope.
- Corrosion-proof aluminum hawse fairlead.
- Winch Electrical Harness (715008850) and winch compatible front bumper are required.

**WARN<sup>†</sup> VRX Winches****WARN VRX 45 Winch**

Maverick R

**715006110**

- Extreme IP68-rated waterproof sealing keeps the elements out.
- Durable all-metal construction.
- Black powder-coated finish and stainless steel fasteners for corrosion resistance.
- Robust new clutch design based on 70+ years of WARN 4 WD hub lock know-how.
- Load-holding brake for great control.
- Smooth and reliable all-metal three-stage planetary gear train.
- Dash-mounted rocker control.
- Limited lifetime warranty (mechanical), 3-year warranty (electrical).
- Pulling strength capability of 4,500 lb (2,041 kg).
- 50' of 1/4" (15 m of 6.3 mm) wire steel cable.
- Roller fairlead.
- Winch Electrical Harness (715008850), Winch Roller Fairlead Spacer (715008922) and winch compatible front bumper are required.









**WARN VRX 45-S Winch**

Maverick R

**715006111**

- Extreme IP68-rated waterproof sealing keeps the elements out.
- Durable all-metal construction.
- Black powder-coated finish and stainless steel fasteners for corrosion resistance.
- Robust new clutch design based on 70+ years of WARN 4 WD hub lock know-how.
- Load-holding brake for great control.
- Smooth and reliable all-metal three-stage planetary gear train.
- Dash-mounted rocker control.
- Limited lifetime warranty (mechanical), 3-year warranty (electrical).
- Pulling strength capability of 4,500 lb (2,041 kg).
- 50' of 1/4" (15 m of 6.3 mm) synthetic rope.
- Cast aluminum hawse fairlead.
- Winch Electrical Harness (715008850) and winch compatible front bumper are required.

## Winch Accessories

|  |  |                                      |
|--|--|--------------------------------------|
| <b>Can-Am HD Hawse Fairlead</b>  | Can-Am HD Winch  | <b>715006426</b>                     |
|     | <ul style="list-style-type: none"> <li>• A must when upgrading your winch with a synthetic cable, this corrosion-proof aluminum hawse fairlead will prevent the cable from snapping in a corner of a roller fairlead and from wearing prematurely due to the rough surface of the worn roller guide.</li> <li>• Must be used with synthetic cables only.</li> </ul>  |                                      |
| <b>WARN Hawse Fairlead</b>   | WARN Winch   | <b>715007785</b>                     |
|     | <ul style="list-style-type: none"> <li>• Double-powder-coated construction.</li> <li>• Required to use the Synthetic Winch Cable (715001118) on WARN winches.</li> <li>• To be used with synthetic winch cables only.</li> </ul>   |                                      |
| <b>NEW Winch Roller Fairlead Spacer</b>  | Maverick R   | <b>715008922</b>                     |
|     | <ul style="list-style-type: none"> <li>• Required when using a Winch and Roller Fairlead with a wire cable.</li> <li>• Made of aluminum, with an anti-corrosion finish.</li> </ul>   |                                      |
| <b>Synthetic Winch Cable</b>   | Can-Am HD Winch<br>WARN Winch  | <b>715006430</b><br><b>715007783</b> |
|     | <ul style="list-style-type: none"> <li>• 50' of ¼" (15.2 m of 6.35 mm) synthetic cable for Can-Am HD winches.</li> <li>• Can-Am HD Hawse Fairlead (715006426) is required when upgrading to a synthetic cable to avoid premature cable damage and wear.</li> <li>• WARN Hawse Fairlead (715007785) is required when upgrading to a synthetic cable to avoid damage and premature wear of the cable.</li> </ul> |                                      |
| <b>Wire Rope Replacement</b>   | Can-Am HD Winch<br>WARN Winch  | <b>705014978</b><br><b>715006699</b> |
|    | <ul style="list-style-type: none"> <li>• 43' of ¼" (14.3 m of 6.3 mm) wire rope for Can-Am HD Winch.</li> <li>• 55' of ¼" (16.8 m of 6.35 mm) wire rope for WARN winch kit.</li> <li>• 4,500 lb (2,041 kg) pulling strength.</li> </ul>  |                                      |
| <b>Synthetic Cable Extension</b>   | <b>715001120</b>   |                                      |
|   | <ul style="list-style-type: none"> <li>• Lightweight ¼" (6.35 mm) diameter, easy to handle and won't rattle in cargo box.</li> <li>• Easily attaches to winch cable to provide additional 50' (15.2 m) of distance.</li> <li>• 4,500 lb (2,041 kg) single line capacity.</li> </ul>  |                                      |
| <b>Winch Electrical Harness</b><br><i>(Not illustrated)</i>                          | Maverick R   | <b>715008850</b>                     |
| <ul style="list-style-type: none"> <li>• Required for winch installation.</li> </ul> |  |                                      |
| <b>Wired Remote Control</b>  | Can-Am HD Winch†   | <b>715006504</b>                     |
|   | <ul style="list-style-type: none"> <li>• This kit allows winch owners to add the hand-held remote to vehicles with a stock winch.</li> <li>• OEM stock winch is sold separately.</li> <li>• EC compliant.</li> </ul> <p>† Harness (710001023) is required to use remote control on a vehicle with a factory installed winch.<br/>‡ Remote Control (710007050) and connection socket are included.</p>          |                                      |
| <b>Wireless Remote Control</b>   | WARN Winch   | <b>715002542</b>                     |
|   | <ul style="list-style-type: none"> <li>• The system is quick and easy to install, thanks to a wiring harness with an integrated antenna and all necessary mounting hardware.</li> <li>• The system allows you to operate your winch from anywhere within a 50' (15.2 m) radius, increasing your recovery options.</li> <li>• All components are weatherproof.</li> </ul>                                       |                                      |



# PERFORMANCE

## NEW Lonestar Racing Fire Extinguisher Support

Maverick R

715007320



- Quick-release support that lets riders slide the fire extinguisher out in a matter of seconds in an emergency.
- Made of billet anodized black aluminum.
- Fits 1.85" (4.7 cm) tubing.
- Can be fixed anywhere on the cage.
- Provides riders with the safety and security of knowing they have dependable emergency equipment on board.
- Comes with both billet mounts, quick-pull pin, mounting plate and two clamps.
- Fire extinguisher sold separately.
- "Lonestar Racing for Can-Am" branded.

## Performance Air Filter by Twin AIR†

Maverick R

715002895



- The best choice for the harshest conditions.
- Multiple staged oiled filtering foam for superior dust retaining capacity with high airflow.
- Washable and reusable.

## Digitally Encoded Security System (D.E.S.S.) Green Key

Maverick R

710005232



- Top-security anti-theft protection for your vehicle.
- Encrypted chip technology restricts access to your vehicle's electronic ignition system.
- One vehicle/one code.
- A vibration/shock-resistant ball-and-socket design that ensures a reliable connection.
- 3 programmable modes:
  - Work mode: Limits vehicle speed to 40 kph (25 mph) but does not limit engine torque.
  - Normal mode: Limits vehicle speed to 70 kph (44 mph) and 50% torque reduction.
  - Performance mode: No restrictions.